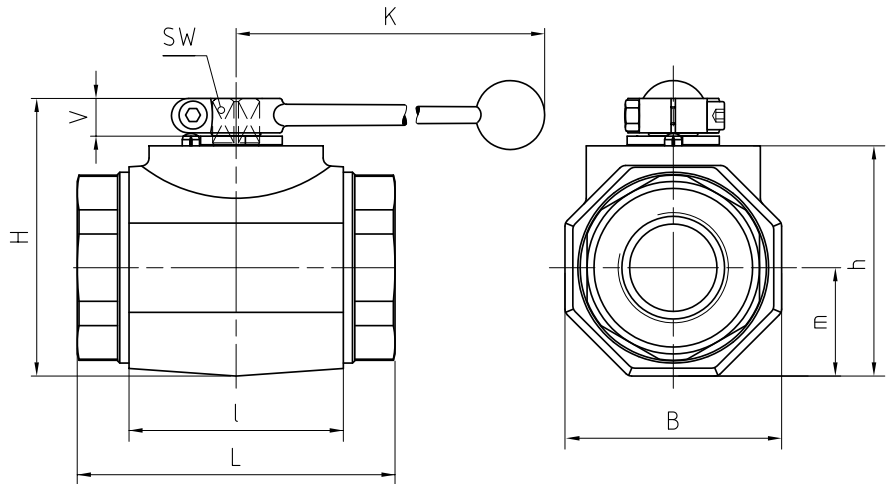
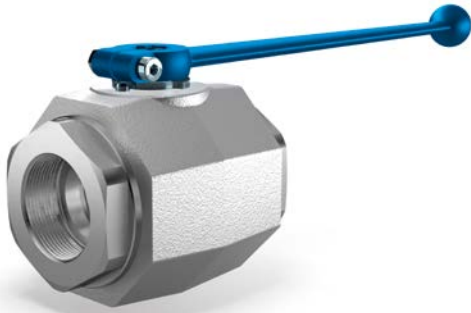


2-way ball valve Steel

MKHP420

Two-way



AVAILABLE SIZES

DN32 - DN50 (1 1/4" to 2")

CONNECTIONS

DIN ISO 228 Female thread, ANSI B1.20.1 NPT Female thread, DIN 2353/ISO 8434-1 Light / Heavy series, SAE J 514/ISO/DIS11926-1 Female thread, others on request

ACCESSORIES ON REQUEST

- Locking devices page 230 - 233
- Actuators 228 - 229
- Mounting holes 26
- Position switches 236 - 237
- Combinations 196 - 197
- Detent on request

MATERIAL CODE DESCRIPTION

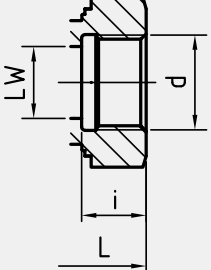
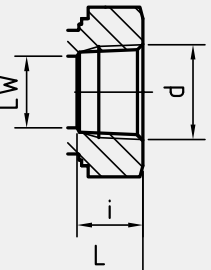
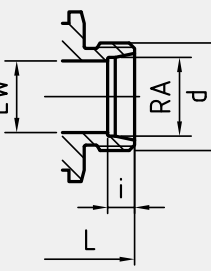
| Materials | 112A | 1128 |
|-------------|---------------|---------------|
| Body | Steel | Steel |
| Ball | Steel | Steel |
| Stem | Steel | Steel |
| Ball seats | POM | POM |
| O-rings | NBR | FPM |
| Tmin / Tmax | -20°C / 100°C | -20°C / 100°C |

GENERAL DIMENSIONS

| Type | l | B 8Kt | H | h | m | V | SW | K | Lever |
|--------------|-----|----------|-----|-----|------|------|----|-----|-------|
| MKHP420-DN32 | 80 | 81 | 107 | 86 | 40,5 | 16,5 | 17 | 320 | Al |
| MKHP420-DN40 | 85 | 100 | 124 | 103 | 50 | 16,5 | 17 | 320 | Al |
| MKHP420-DN50 | 100 | 118 | 138 | 117 | 59 | 16,5 | 17 | 320 | Al |

2-way ball valve Steel

MKHP420

| CONNECTION TYPE | DIMENSIONS | | | | | | ORDER CODE PER MATERIAL COMBINATION | | | |
|---|------------------------|----|-----|------|-----------|-------------|-------------------------------------|----------|--------|--------|
| DIN ISO 228 FEMALE THREAD | Type | LW | L | i | d | Weight [Kg] | PN [bar] | 112A | 1128 | |
|  | MKHP420-DN32-G1 1/4 | 32 | 111 | 22 | G1 1/4 | 3,47 | 420 | 43548* | 43551* | |
| | MKHP420-DN40-G1 1/2 | 38 | 130 | 24 | G1 1/2 | 5,67 | 420 | 43549* | 43552* | |
| | MKHP420-DN50-G2 | 48 | 140 | 26 | G2 | 8,14 | 420 | 43550* | 43553* | |
| | | | | | | | | | | |
| ANSI B1.20.1 NPT FEMALE THREAD | Type | LW | L | i | d | Weight [Kg] | PN [bar] | 112A | 1128 | |
|  | MKHP420-DN32-1 1/4"NPT | 32 | 120 | 22,1 | 1 1/4"NPT | 3,52 | 420 | 43677* | 43680* | |
| | MKHP420-DN40-1 1/2"NPT | 38 | 130 | 22,1 | 1 1/2"NPT | 5,69 | 420 | 43678* | 43681* | |
| | MKHP420-DN50-2"NPT | 48 | 140 | 30,3 | 2"NPT | 8,14 | 420 | 43679* | 43682* | |
| | | | | | | | | | | |
| DIN 2353 / ISO 8434-1 LIGHT SERIES | Type | LW | RA | L | i | d | Weight [Kg] | PN [bar] | 112A | 1128 |
|  | MKHP420-DN32-35L | 32 | 35 | 136 | 10,5 | M 45x2 | 3,58 | 420 | 43683* | 43685* |
| | MKHP420-DN40-42L | 38 | 42 | 147 | 11 | M 52x2 | 5,54 | 420 | 43684* | 43686* |
| | | | | | | | | | | |

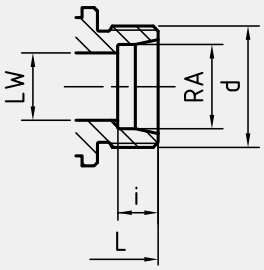
Please note the pressure ratings of the tube connections!

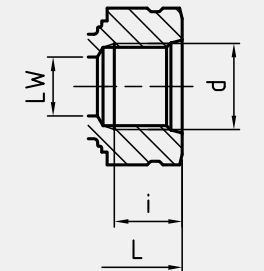
*Article usually in stock.

2-way ball valve Steel

MKHP420

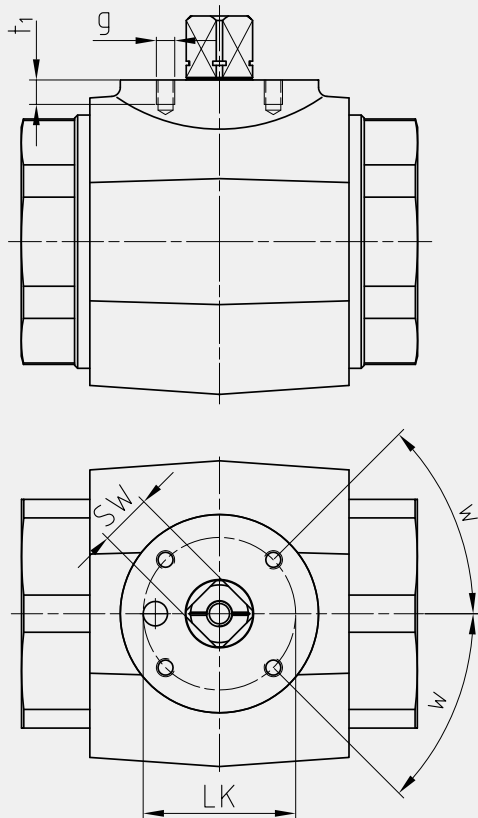
Two-way

| CONNECTION TYPE | DIMENSIONS | | | | | | | ORDER CODE PER MATERIAL COMBINATION | | |
|--|------------------|----|----|-----|----|--------|-------------|-------------------------------------|--------|--------|
| DIN 2353 / ISO 8434-1 HEAVY SERIES | Type | LW | RA | L | i | d | Weight [Kg] | PN [bar] | 112A | 1128 |
|  | MKHP420-DN32-38S | 32 | 38 | 148 | 16 | M 52x2 | 3,77 | 420 | 43687* | 43688* |
| | | | | | | | | | | |

| CONNECTION TYPE | DIMENSIONS | | | | | | ORDER CODE PER MATERIAL COMBINATION | | |
|---|------------------------|----|-----|----|---------------|-------------|-------------------------------------|--------|--------|
| SAE J514/ISO/DIS11926-1 FEMALE THREAD | Type | LW | L | i | d | Weight [Kg] | PN [bar] | 112A | 1128 |
|  | MKHP420-DN32-1 5/8" UN | 30 | 111 | 20 | 1 5/8" -12 UN | 3,52 | 420 | 43689* | 43692* |
| | MKHP420-DN40-1 7/8" UN | 38 | 130 | 20 | 1 7/8" -12 UN | 5,69 | 420 | 43690* | 43693* |
| | MKHP420-DN50-2 1/2" UN | 45 | 140 | 20 | 2 1/2" -12 UN | 7,99 | 420 | 43691* | 43694* |

Please note the pressure ratings of the tube connections!

*Article usually in stock.



ASSEMBLING THREADS AS PER ISO 5211

| DN | SW | LK | g | t ₁ | w | ISO5211 |
|----|----|----|----|----------------|-----|---------|
| 32 | 17 | 50 | M6 | 8 | 45° | F05 |
| 40 | 17 | 50 | M6 | 8 | 45° | F05 |
| 50 | 17 | 50 | M6 | 8 | 45° | F05 |

