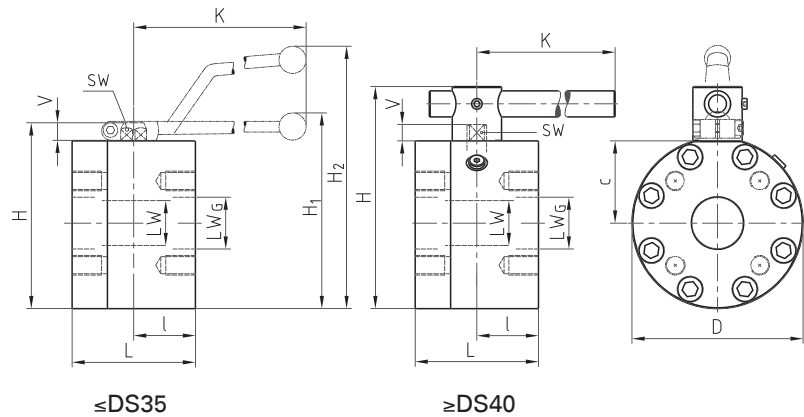
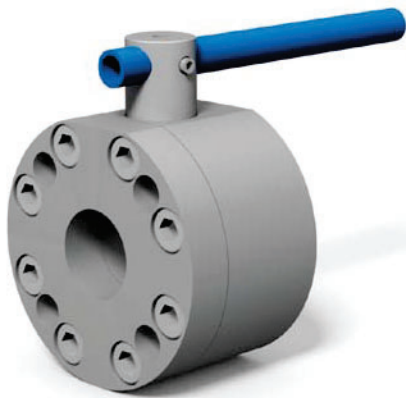


Flange ball valve with ISO connection Steel

KH-ISO



Two-way

AVAILABLE SIZES

1/2" to 8" (Dash Size 8-128)

ACCESSORIES ON REQUEST

- Locking devices page 224 - 228
- Actuators 222 - 223
- Mounting holes on request
- Position switches on request
- Combinations on request
- Detent on request

CONNECTIONS

ISO 6164-1 (ISO250), ISO 6164-2 (ISO400), ISO320 (not part of ISO 6164)

MATERIAL CODE DESCRIPTION

Materials	DN15-50 212A	DN15-50 212B	DN65-200 282A	DN65-200 282B
Body	Steel	Steel	Steel	Steel
Ball	Steel	Steel	Steel	Steel
Stem	Steel	Steel	Duplex	Duplex
Ball seats	POM	POM	POM	POM
O-rings	NBR	FPM	NBR	FPM
Tmin / Tmax	14°F / 212°F	14°F / 212°F	14°F / 212°F	14°F / 212°F

GENERAL DIMENSIONS ISO 6164-1 (ISO250)

Type	LW	LW _g	L	I	D	H	c	V	K	SW	H ₁	H ₂	Handle
KH-8	0.59	0.59	3.35	1.77	3.07	3.27	1.22	0.51	6.30	0.47	-	5.00	Al
KH-12	0.79	0.79	3.46	1.50	4.69	4.33	1.44	0.55	7.87	0.55	4.49	-	Zn
KH-16	0.98	0.98	3.46	1.50	4.96	4.61	1.56	0.55	7.87	0.55	4.72	-	Zn
KH-20	1.26	1.26	4.13	1.97	5.71	6.22	2.68	0.67	12.60	0.67	6.57	-	Al
KH-24	1.50	1.50	4.33	2.17	6.50	7.01	3.07	0.67	12.60	0.67	7.36	-	Al
KH-32	1.89	1.85	4.57	2.28	7.80	8.27	3.70	0.67	12.60	0.67	8.62	-	Al
KH-36	1.89	2.28	4.84	2.28	7.80	8.27	3.70	0.67	12.60	0.67	8.62	-	Al
KH-40	2.56	2.76	5.91	2.95	8.19	10.63	3.94	0.79	23.62	0.63	-	-	St ⁽¹⁾

GENERAL DIMENSIONS ISO 6164-2 (ISO400)

Type	LW	LW _g	L	I	D	H	c	V	K	SW	H ₁	H ₂	Handle
KH-8	0.59	0.55	3.35	1.77	3.07	3.27	1.22	0.51	6.30	0.47	-	5.00	Al
KH-12	0.79	0.71	3.46	1.50	4.69	4.33	1.44	0.55	7.87	0.55	4.49	-	Zn
KH-16	0.98	0.87	3.46	1.50	4.96	4.61	1.56	0.55	7.87	0.55	4.72	-	Zn
KH-20	1.26	1.14	4.13	1.97	5.71	6.22	2.68	0.67	12.60	0.67	6.57	-	Al
KH-24	1.50	1.38	4.33	2.17	6.50	7.01	3.07	0.67	12.60	0.67	7.36	-	Al
KH-32	1.89	1.69	4.84	2.28	7.80	8.27	3.70	0.67	12.60	0.67	8.62	-	Al
KH-36	1.89	2.09	4.84	2.28	7.80	8.27	3.70	0.67	12.60	0.67	8.62	-	Al
KH-40	2.56	2.28	5.91	2.95	8.82	11.26	4.25	0.79	23.62	0.63	-	-	St ⁽¹⁾
KH-44	2.56	2.48	5.91	2.95	8.82	11.26	4.25	0.79	23.62	0.63	-	-	St ⁽¹⁾
KH-48 (PR1450)	2.99	2.91	5.51	2.76	8.98	11.54	4.21	1.02	23.62	0.75	-	-	St ⁽¹⁾
KH-48 (PR5800)	2.99	2.99	6.69	3.07	10.16	12.40	4.51	1.02	23.62	0.75	-	-	St ⁽¹⁾

Please note the pressure ratings of the connection flanges!

⁽¹⁾ Handle must be fixed centrally during operation. In case of vibration the handle may otherwise operate the valve by itself.



Flange ball valve with ISO connection Steel

KH-ISO

GENERAL DIMENSIONS ISO 320 (not part of ISO 6164)



Type	LW	LW _e	L	I	D	H	c	V	K	SW	H ₁	H ₂	Handle
KH-10													
	on request												
KH-12	0.79	0.79	3.46	1.50	4.69	4.33	1.44	0.55	7.87	0.55	4.49	-	Zn
KH-16	0.98	0.98	3.46	1.50	4.96	4.61	1.56	0.55	7.87	0.55	4.72	-	Zn
KH-20	1.26	1.26	4.13	1.97	5.71	6.22	2.68	0.67	12.60	0.67	6.57	-	Al
KH-24	1.50	1.50	4.33	2.17	6.50	7.01	3.07	0.67	12.60	0.67	7.36	-	Al
KH-32	1.89	1.89	4.80	2.28	7.80	8.27	3.70	0.67	12.60	0.67	8.62	-	Al
KH-40	2.56	2.48	5.91	2.95	8.19	10.63	3.94	0.79	23.62	0.63	-	-	St ⁽¹⁾
KH-48 (PR1450)	2.99	2.99	5.51	2.76	8.46	10.98	3.94	1.02	23.62	0.75	-	-	St ⁽¹⁾
KH-48 (PR5000)	2.99	2.99							refer to KH-DN80-ISO400 (PR5800)				
KH-64	3.94	3.94	7.87	3.94	10.24	12.87	4.80	1.02	35.43	0.94	-	-	St ⁽¹⁾
KH-80	4.65	4.65	9.06	4.33	15.35	18.50	7.28	1.26	35.43	1.42	-	-	St ⁽¹⁾
KH-96	5.91	5.91	11.22	5.12	15.35	18.70	7.48	1.26	35.43	1.42	-	-	St ⁽¹⁾
KH-128	7.56	7.87	14.88	5.91	17.95	23.54	8.78	2.40	37.01	1.81	-	-	St ⁽¹⁾

Please note the pressure ratings of the connection flanges!

⁽¹⁾ Handle must be fixed centrally during operation. In case of vibration the handle may otherwise operate the valve by itself.

Two-way



Flange ball valve with ISO connection Steel

KH-ISO

Two-way

CONNECTION TYPE	DIMENSIONS					ORDER CODE PER MATERIAL COMBINATION		
	Type	LK	M	t	Weight [lb]	Pressure Rating [psi]	212A (282A)	2128 (2828)
	KH-8-ISO250	1.65 ⁽¹⁾	4 x M8	0.63	6.39	5000	29452	37481
	KH-12-ISO250	1.97	4 x M8	0.59	14.99	5000	29453	37482
	KH-16-ISO250	2.44	4 x M10	0.79	15.88	4500	29455	37483
	KH-20-ISO250	2.87	4 x M12	0.83	27.56	3600	40654	37484
	KH-24-ISO250	3.35	4 x M16	0.96	36.60	3600	29538	37485
	KH-32-ISO250	3.86	4 x M16	1.00	54.90	3600	37839	37486
	KH-36-ISO250	4.65	4 x M20	1.30	58.65	3600	36011	37487
	KH-40-ISO250	5.71	4 x M20	1.30	81.36	3600	31638	37488

CONNECTION TYPE	DIMENSIONS					ORDER CODE PER MATERIAL COMBINATION		
	Type	LK	M	t	Weight [lb]	Pressure Rating [psi]	212A (282A)	2128 (2828)
	KH-8-ISO400	1.65 ⁽¹⁾	4 x M8	0.63	6.39		37842	37849
	KH-12-ISO400	1.97	4 x M8	0.59	14.99	5800	37843	37850
	KH-16-ISO400	2.44	4 x M10	0.79	15.88	5800	37844	37851
	KH-20-ISO400	2.87	4 x M12	0.83	27.56	5800	37845	37852
	KH-24-ISO400	3.35	4 x M16	0.96	36.60	5800	19556	37853
	KH-32-ISO400	3.86	4 x M16	1.00	54.90	5800	37846	37854
	KH-36-ISO400	4.65	4 x M20	1.22	58.65	5800	36010	37855
	KH-40-ISO400	5.71	4 x M24	1.48	93.78	5800	31493	15045
	KH-44-ISO400	6.30	4 x M24	1.48	94.82	4500	37847	37856
	KH-48-ISO400 (PR1450)	6.89	4 x M30	1.38	112.46	1450	37848	37857
	KH-48-ISO400 (PR5800)	6.89	4 x M30	1.91	138.92	5800	58109	58110

CONNECTION TYPE	DIMENSIONS					ORDER CODE PER MATERIAL COMBINATION		
	Type	LK	M	t	Weight [lb]	Pressure Rating [psi]	212A (282A)	2128 (2828)
	KH-10-ISO320	2.13	4 x M10	on request			37827	37830
	KH-12-ISO320	2.52	4 x M12	0.87	14.99	5000	37459	37463
	KH-16-ISO320	2.83	4 x M12	0.79	15.88	5000	37828	37831
	KH-20-ISO320	3.15	4 x M16	0.94	27.56	5000	37460	37464
	KH-24-ISO320	3.86	4 x M16	0.98	36.60	5000	37461	37465
	KH-32-ISO320	4.65	4 x M20	1.10	54.90	5000	37462	37466
	KH-40-ISO320	5.71	4 x M24	1.42	79.38	5000	19987	37467
	KH-48-ISO320 (PR1450)	6.89	4 x M30	1.38	75.54	1450	16635	32093
	KH-64-ISO320	7.87	8 x M24	1.42	154.35	5000	34178	37468
	KH-80-ISO320	9.65	8 x M30	1.77	460.85	5000	37829	37832
	KH-96-ISO320	9.65	8 x M30	1.81	496.13	5000	45938	41962
	KH-128-ISO320	12.40	8 x M36	2.17	870.98	5000	41393	41965

⁽¹⁾ rotated by 45°



BYPASS OPTION



When larger ball valves have to be activated at full differential pressure, a smaller ball valve can be used before activation in order to equalize the pressure.

We combine the bypass within the flange valve body to provide less leakage points compared to a piped solution.

- Both main and bypass valve can be offered with locking device or any other accessory like limit switches or actuators.
- Bypass is a standard manifold mounting PKH valve which can be easily maintained or replaced
- Bypass manifold mounting valve provides bubble tight shut off.