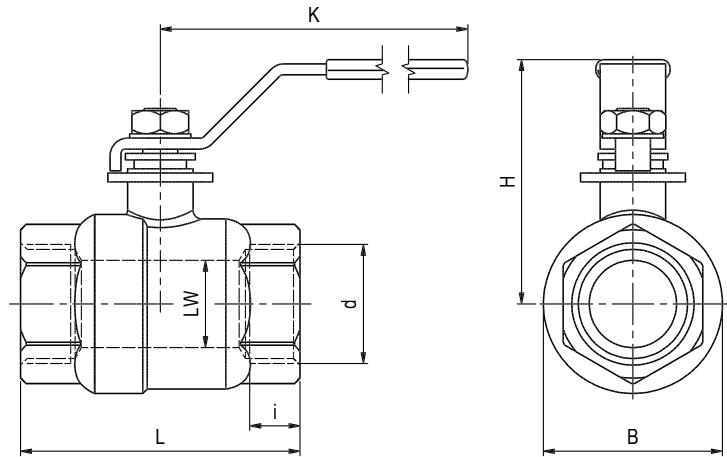




2-way low-pressure ball valve Stainless Steel

NKH

Two-way



AVAILABLE SIZES

1/4" to 4" (Dash Size 4-64)

CONNECTIONS

ANSI B1.20.1 NPT Female thread,
SAE J514 UN/UNF Female thread

MATERIAL CODE DESCRIPTION

Materials	4474
Body	CF8M (Stainless Steel)
Ball	Stainless Steel
Stem	Stainless Steel
Ball seats	PTFE
O-rings	PTFE
Tmin /Tmax	-22°F / 212°F

ACCESSORIES ON REQUEST

- Locking Device **included**

GENERAL DIMENSIONS

Type	LW	L	B	h	K	i	Handle	Weight [lb]
NKH-5/4	0.39	1.97	1.14	1.77	3.94	0.47	SS	0.46
NKH-8/6	0.49	1.97	1.14	1.77	3.94	0.43	SS	0.46
NKH-10	0.59	2.32	1.34	1.97	3.94	0.51	SS	0.62
NKH-12	0.79	2.72	1.59	2.05	4.06	0.61	SS	0.88
NKH-16	0.98	3.11	1.94	2.76	5.91	0.61	SS	1.59
NKH-20	1.26	3.70	2.38	2.95	5.91	0.77	SS	3.46
NKH-24	1.50	4.06	2.81	3.35	7.20	0.83	SS	4.74
NKH-32	1.97	4.84	3.55	3.70	7.20	0.91	SS	6.13
NKH-40	2.56	6.30	4.59	5.31	9.57	1.14	SS	12.79
NKH-48	3.15	7.09	5.43	5.71	9.57	1.14	SS	19.40
NKH-64	3.94	9.06	6.71	6.50	12.91	1.14	SS	37.93

All dimensions are in inches.



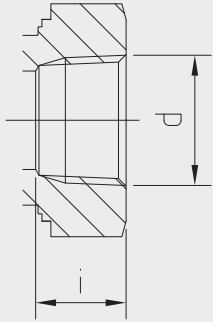
2-way low-pressure ball valve Stainless Steel

NKH

Two-way

CONNECTION TYPE

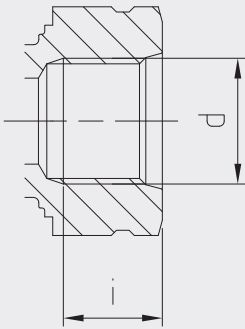
ANSI B1.20.1 NPT
FEMALE THREAD



ORDER CODE PER MATERIAL COMBINATION

Type	Pressure Rating [psi]	4474
NKH-4-NPT	915	70002
NKH-6-NPT	915	70003
NKH-8-NPT	915	70004
NKH-12-NPT	915	70005
NKH-16-NPT	915	70006
NKH-20-NPT	915	70007
NKH-24-NPT	915	70008
NKH-32-NPT	915	70009
NKH-40-NPT	915	70010
NKH-48-NPT	915	70011
NKH-64-NPT	915	70012

SAE J514 UN/UNF
FEMALE THREAD



Type	Pressure Rating [psi]	4474
NKH-4-SAE	915	70013
NKH-6-SAE	915	70014
NKH-8-SAE	915	70015
NKH-12-SAE	915	70016
NKH-16-SAE	915	70017
NKH-20-SAE	915	70018
NKH-24-SAE	915	70019
NKH-32-SAE	915	70020
NKH-40-SAE	915	70021
NKH-48-SAE	915	70022
NKH-64-SAE	915	70023

Please note the pressure ratings of the tube connections!

PRESSURE/TEMPERATURE RELATION

Pressure/Temperature curve
NKH Stainless Steel

